

Installation Sheet

KSRDL102

Read these instructions before commencing installation. Please give these instructions to the owner/occupier after installation to retain for future reference/maintenance.

Twist & Lock

Recessed Tiltable Downlight

Available finishes:- White, Chrome & Satin Chrome

IP20    240V 50W Max

These Fittings are Class II: Double insulated, No Earth required.

Important Information

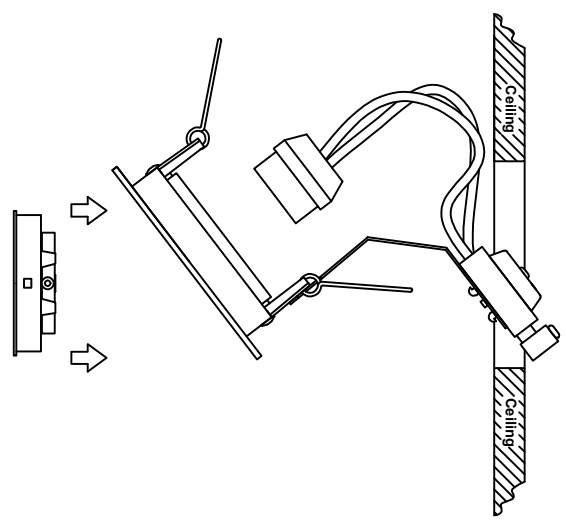
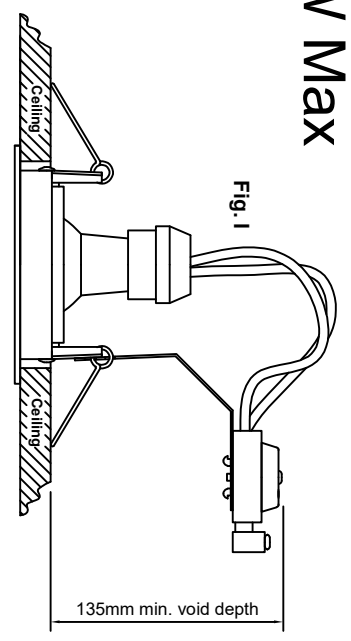
It is recommended that these luminaires are installed and fitted by a qualified electrician ensuring the installation complies with current IEE wiring regulations & local building control. These products are designed for connection to a 240V~50Hz supply. Any faulty, broken or damaged luminaires should be replaced immediately. KSR will not accept responsibility for any claims arising from a poor installation. Please Note: The limited warranty shall be deemed null and void in the following circumstances: Failure by the installer, end user or any third party to exercise caution to protect any covered product or part from outside damage, humidity conditions, fluctuations in the electrical system or physical abuse as well as failure related to workmanship in the installation of the products or parts.

Important User Advice

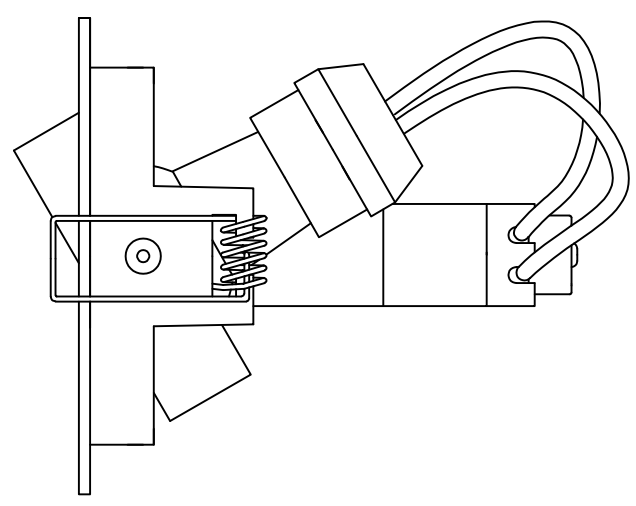
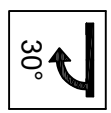
Always switch off mains supply before installing, lamp changes or servicing. This luminaire is suitable for indoor use only and should not be fitted to damp or wet surfaces such as freshly plastered or painted ceilings. At the end of life the luminaire is classed as WEEE under directive 2014/30/EU and should be disposed of in accordance with local legislation.

Installation Details

Cut a round hole in ceiling and ensure adequate minimum ceiling void without infringing on joists, water pipes or electrical cables. Connect this product to a mains 240V 50Hz supply. Fit this product as per the illustration shown in (Fig 1). Do not fit onto new plaster or damp areas. This appliance will be considered Class II, the cabling from connector to lampholder has two thickness of insulation.



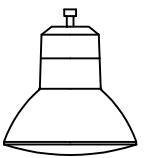
*Ensure there is adequate free air ventilation around fitting. The nearest illuminated surface must be at least 0.5m distance from the front of the fitting.



	ØRim Size	ØCut out	Void Depth Req'd	Max Wattage / Lamp Type
KSRDL 102	95mm	82mm	135mm	GU10 - 50W

Lamp Details

Lamp Cap: GU10
Max Wattage: 50W



KSR Lighting recommend only branded lamps
For example: Sylvania, GE, Philips or Osram

KSR Lighting After-sales: 023 92 674343
E-mail: aftersales@ksrlighting.com

