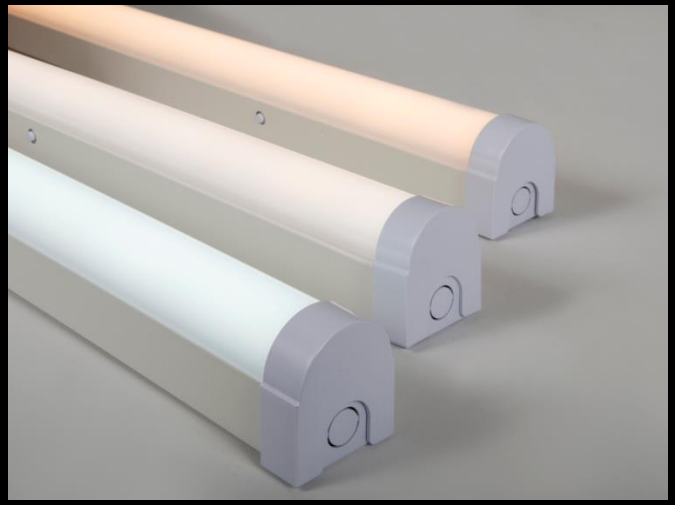


Navara X CCT LED Batten

Commercial Lighting



Data Sheet

Product Information

The Navara X LED CCT battens are a simple and cost-effective solution for a wide range of Commercial and Retail applications. Push wire terminals for plug and play installation

They come complete with a 5 year warranty for your peace of mind.

Product Features

- 5 year warranty*
- IP20
- High efficiency – up to 125lm/w
- 3000K/4000K/6500K LED
- CRI: Ra80
- 140° beam angle
- Instant on
- Range of sizes and wattages
- Emergency options available
- Lighting designers can download photometric data from our website

*Subject to KSRs Terms and Conditions

Product Specification

Product Code	Product Description	Wattage (W)	CCT (K)	Lumens (lm)	CRI (Ra)	Energy Efficiency Class	Protection Class
KSR98140	Navara X4S 23W 4ft LED CCT Batten	23	3000	2625	80	A+	I
			4000	2805			
			6500	2710			
KSR98141	Navara X4T 40W 4ft LED CCT Batten	40	3000	4650	80	A+	I
			4000	4910			
			6500	4785			
KSR98142	Navara X5S 40W 5ft LED CCT Batten	38	3000	4485	80	A+	I
			4000	4635			
			6500	4570			
KSR98143	Navara X5T 60W 5ft LED CCT Batten	60	3000	6895	80	A+	I
			4000	7215			
			6500	7010			
KSR98144	Navara X6S 48W 6ft LED CCT Batten	48	3000	5610	80	A+	I
			4000	5880			
			6500	5740			
KSR98145	Navara X6T 65W 6ft LED CCT Batten	65	3000	7510	80	A+	I
			4000	7995			
			6500	7745			

*For emergency options add EM after the part number

Technical Data	Navara X4S	Navara X4T	Navara X5S	Navara X5T	Navara X6S	Navara X6T
Nominal voltage	200~240VAC	200~240VAC	200~240VAC	200~240VAC	200~240VAC	200~240VAC
Operating frequency	50-60Hz	50-60Hz	50-60Hz	50-60Hz	50-60Hz	50-60Hz
Circuit Wattage	22.5w including driver losses	39.40w including driver losses	37.2w including driver losses	58.9w including driver losses	47.1w including driver losses	64.2w including driver losses
Circuit Current	0.098	0.170	0.160	0.255	0.205	0.279
Driver Current Rating	500mA	880mA	880mA	1280mA	TBC	1380mA
PFC	0.94	0.95	0.95	0.95	0.95	0.95
In Rush Current	3.32A Max Peak	3.33A Max Peak	4.5A Max Peak	4.5A Max Peak	4.08A Max Peak	4.08A Max Peak
Start Time	< 0.5 Sec	< 0.5 Sec	< 0.5 Sec	< 0.5 Sec	< 0.5 Sec	< 0.5 Sec
Ambient temperature range	-20°C to +45°C	-20°C to +45°C	-20°C to +45°C	-20°C to +45°C	-20°C to +45°C	-20°C to +45°C
IP rating	20	20	20	20	20	20

Construction

Body: Powder coated Mild Steel
Diffuser: Polycarbonate

Standards

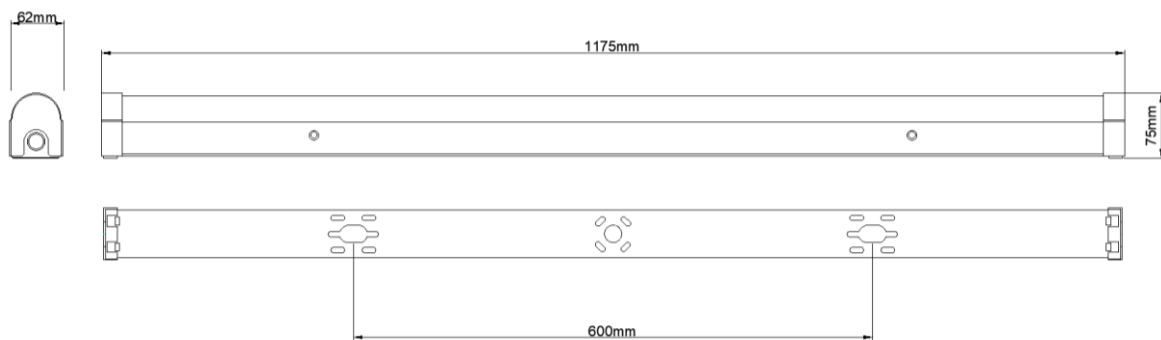
BSEN60598-1:2015 Luminaires – Part 1: General requirements and tests
BSEN60598-2-22:2014 Luminaires – Part 2: Luminaires for Emergency Lighting

In Conformity with

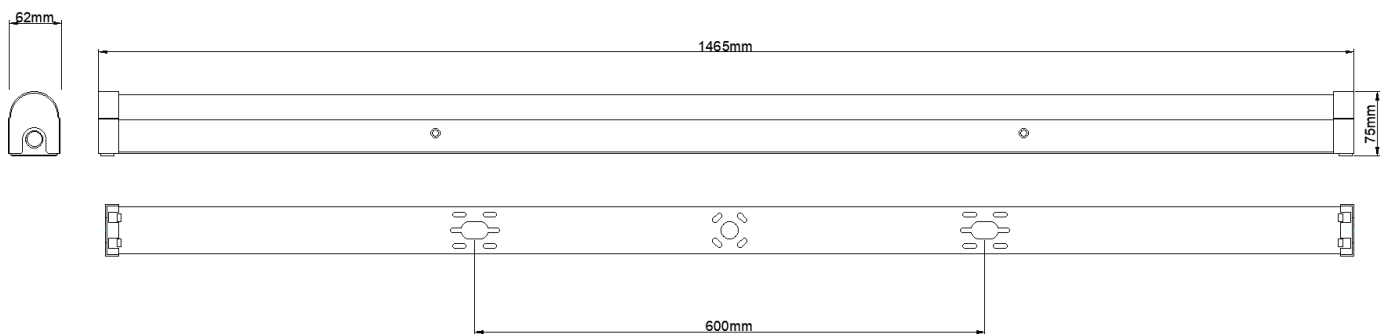
LVD	Low voltage directive 2014/35/EU
EMC	Electromagnetic compatibility directive 2014/30/EU
ERP	Energy related products directive 2009/125/EC
RoHS	Restriction of hazardous substances 2011/65/EU

Product Dimensions

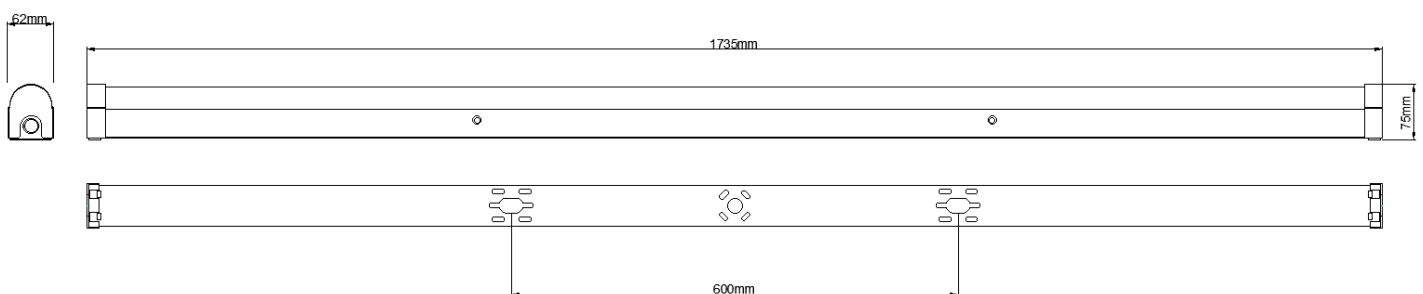
KSR98140-41



KSR98142-43



KSR98144-45



KSR Lighting is constantly developing and improving its products. For this reason, all product descriptions in this data sheet are intended as a general guide, and KSR may change specifications from time to time in the interest of product development, without prior notification or public announcement. All descriptions in this data sheet present only general particulars of the goods to which they refer and shall not form part of any contract. Data in this guide has been obtained in controlled experimental conditions. However, KSR Lighting cannot accept any liability arising from the reliance on such data to the extent permitted.