

Qr Pro Pin Wall Wash LED

Downlights

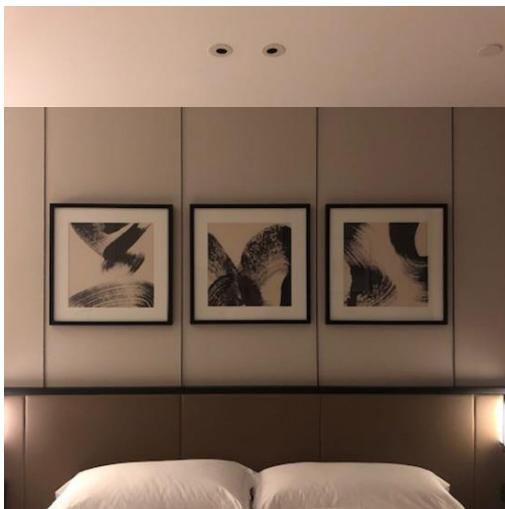


Data Sheet

Product Information

The QR PRO LED downlights are the Ultimate solution for downlighting areas in domestic applications. With a vast array of attachments this solution allows you to build your fitting to suit your needs exactly as intended.

Complete with a 3 years warranty for your peace of mind.




Product Features

- 3 years warranty
- IP20
- Class II
- High efficiency LED technology providing up to 114lm per watt
- Instant on
- Energy savings up to 94% vs 50W Halogen Lamps
- CRI: Ra>84
- 2 reflector options: 15° or 25°
- 2 output options available: 5W or 10W
- 3 Colour temperatures to Choose From 2700K, 3000K and 4000K
- L70/B10 – 52,000hrs

Product Specification

Product Code	Product Description	Wattage (W)	CCT (K)	Lumens (lm)	CRI (Ra)	Energy Efficiency Class	Protection Class
KSRDL400	QR Pro Fixed Recessed Frame						
KSRDL402	QR Pro GU10 Lamp Holder & Push Fit Terminal						
KSRDL403	QR Pro 5w and 10w 2700K LED Module Only	Up to 10	2700	569 @ 5w 803 @ 10w	83	A+	II
KSRDL404	QR Pro 5w and 10w 3000K LED Module Only	Up to 10	3000	573 @ 5w 862 @ 10w	84	A+	II
KSRDL405	QR Pro 5w and 10w 4000K LED Module Only	Up to 10	4000	618 @ 5w 957 @ 10w	83	A+	II
KSRDL406	QR Pro 5w LED Driver for 5w Module	5	N/A	N/A	N/A	A+	II
KSRDL407	QR Pro 10w LED Driver for 10w Module	10	N/A	N/A	N/A	A+	II
KSRDL408	QR Pro 15 degree reflector						
KSRDL409	QR Pro 25 degree reflector						

Rim Options

	KSRDL420	QR Pro White Rim with Pin Wall Wash Baffle
---	-----------------	--

Nominal voltage	220~240VAC
Operating frequency	50/60Hz
Ambient temperature range	0°C~+40°C
IP rating	20

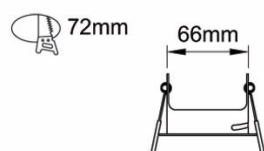
Standards

BSEN60598-1:2015 Luminaires – Part 1: General requirements and tests

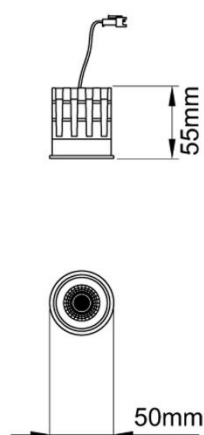
In Conformity with

LVD	Low voltage directive 2014/35/EU
EMC	Electromagnetic compatibility directive 2014/30/EU
ERP	Energy related products directive 2009/125/EC
RoHS	Restriction of hazardous substances 2011/65/EU

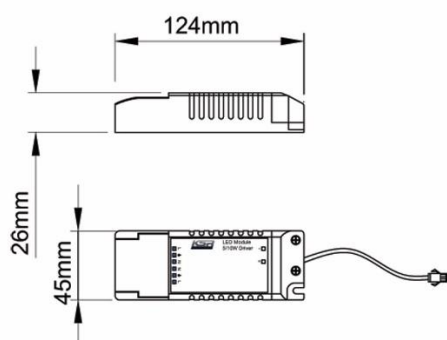
Product Dimensions



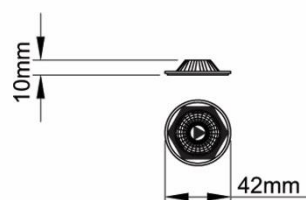
KSRDL400



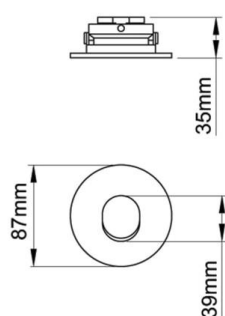
KSRDL403-05



KSRDL406-07



KSRDL408-09



KSRDL420

KSR Lighting is constantly developing and improving its products. For this reason, all product descriptions in this data sheet are intended as a general guide, and KSR may change specifications from time to time in the interest of product development, without prior notification or public announcement. All descriptions in this data sheet present only general particulars of the goods to which they refer and shall not form part of any contract. Data in this guide has been obtained in controlled experimental conditions. However, KSR Lighting cannot accept any liability arising from the reliance on such data to the extent permitted.