

Read these instructions before commencing installation & retain them for future reference.

IP20 ⊕ Ⓢ Ⓢ Ⓢ 240V 17W

Important Information

It is recommended that this track system and track luminaires are installed by a qualified electrician ensuring the installation complies to current IEE wiring regulations & local building control.

These products are designed for connection to a 240V 50Hz supply.

Any broken or damaged parts should be replaced as soon as possible.

KSR will not accept responsibility for any claims arising from a poor installation.

Important User Advice

Always switch off mains supply before servicing or moving track lighting.

The KSR track system is suitable for indoor use only and should not be fitted to damp or wet surfaces such as freshly plastered or painted walls.

Never exceed the maximum 16A load.

Installation Procedure

Once the three circuit track system has been installed familiarise yourself with the luminaire.

Prior to inserting the fitting into the track ensure the locking tab is in the correct position, the tab should be to the side of the track connector.

Ensure the circuit selection dial is on the '0' position.

Insert the track fitting into the track, the track connector is handed and will only fit into the track one way round, do not force the fitting into place.

Pull the locking tab round to secure the fitting into the track.

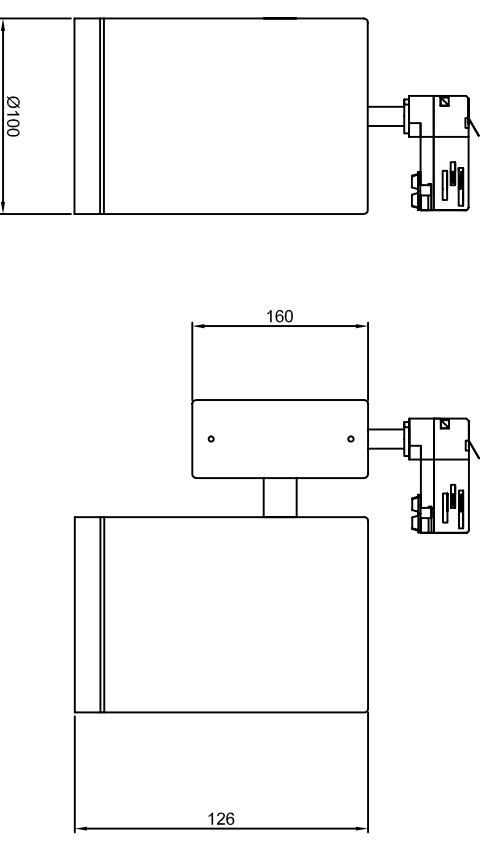
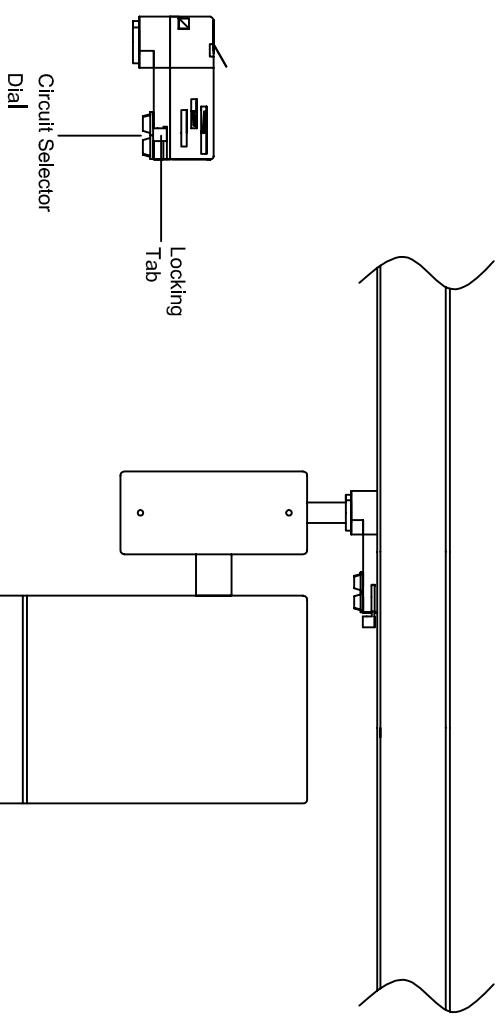
Rotate the circuit selector to the desired switched circuit.

Turn on the power and test the luminaire.

Adjust the fitting to the desired position, the head section will tilt and rotate, do not force the adjustment past the stopping point.

Product Code	Wattage	CCT
KSR6421	17W	3000K

Available Finishes: Black or White



KSR
LIGHTING

KSR Lighting After-sales: 023 92 674343
E-mail: info@ksr-lighting.co.uk