

Read these instructions before commencing installation & retain them for future reference.

IP44 \oplus CE $\text{D}_{0.5\text{m}}$ 240V 2 X 5W

These fittings are Class I and must be Earthed

Important Information

It is recommended that luminaires are installed and fitted by a qualified electrician ensuring the installation complies with current IEE wiring regulations & local building control. These products are designed for connection to a 240V 50Hz supply. Any broken or damaged parts should be replaced as soon as possible. KSR will not accept responsibility for any claims arising from a poor installation.

Important User Advice

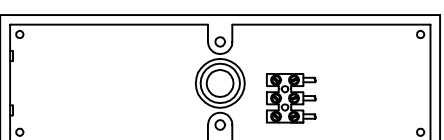
Always switch off mains supply before servicing, fitting or replacing lamps. Always check the lamp is correct for the application, including its voltage and wattage. Ensure the lamp is correctly located in the lampholder.

General Maintenance

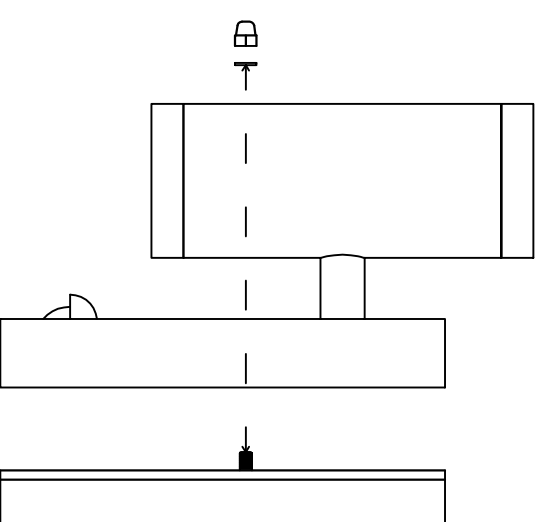
General maintenance and cleaning should be performed at least quarterly. Clean product outer using a damp cloth, dried and buffed to a shine. As a raw finished material atmospheric deposits may build up on the surface, this can be cleaned off to return the product to it's original look. After any maintenance or lamp replacement, remember to check all seals are intact.

Installation Procedure

Familiarize yourself with the LED fixture, remove the two chrome dome nuts that secure the main fitting to the mounting plate. Set aside the dome nuts and two rubber washers. Offer the base plate up to a suitable surface and mark the four fixing points, ensuring the drain holes at the bottom of the plate. Once drilled, dress the mains supply cable through the grommet and secure to the wall. Terminate the fixed wiring into the terminal block, following the guide below and/or the markings on the fitting. Ensure the main gasket is seated correctly on the base plate and place the fitting onto it, replace the rubber gaskets onto the exposed threads and finish with the dome nuts. The two lenses should be tight, please check they secure to ensure a good seal. Flip the small hood on the PIR down to access the PIR settings, adjust the Time, Sensitivity, and Lux to suit, close the hood. Turn on the power and test the luminaire.

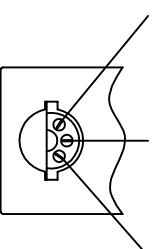


Base Section
This Way Up

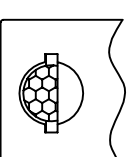


PIR Settings
Switch Time - 12 Sec to 4 Minuets
Range - 9M when mounted at 4M
Viewing Angle - 110°
Min On Lux - 9 Lux

Time Adjust Sensitivity Lux Level



PIR Set Up
Hood Down



Set for Use
Hood Up



Mains Supply **Luminaire**
Live - Brown --- L - Brown
Earth - Green/Yellow --- - Green/Yellow
Neutral - Blue --- N - Blue

Lamp Details
Non Replaceable LED Module
2 x 5W LEDs
3000K Warm White

KSR Lighting After-sales: 023 92 674343
E-mail: info@ksr-lighting.co.uk