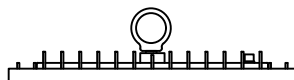




Available finish: Black Only

Read these instructions before commencing installation. Please give these instructions to the owner/occupier after installation to retain for future reference/maintenance.



IP65/IK10   
 240V~50Hz 100W/150W/200W

These fittings are Class I and must be Earthed

**Important Information**

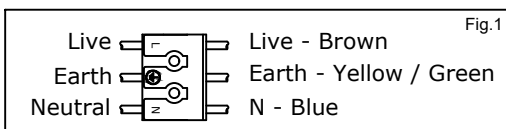
It is recommended that these luminaires are installed and fitted by a qualified electrician ensuring the installation complies with current wiring regulations & local building control. These products are designed for connection to a 240V~50Hz supply. Any faulty, broken or damaged luminaires should be replaced immediately. KSR will not accept responsibility for any claims arising from a poor installation. Please Note: The limited warranty shall be deemed null and void in the following circumstances: Failure by the installer, end user or any third party to exercise caution to protect any covered product or part from outside damage, adverse temperature (normal operating ambient temperature -5 - +35°C), humidity conditions, fluctuations in the electrical system or physical abuse as well as failure related to workmanship in the installation of the products or parts.

**Important User Advice**

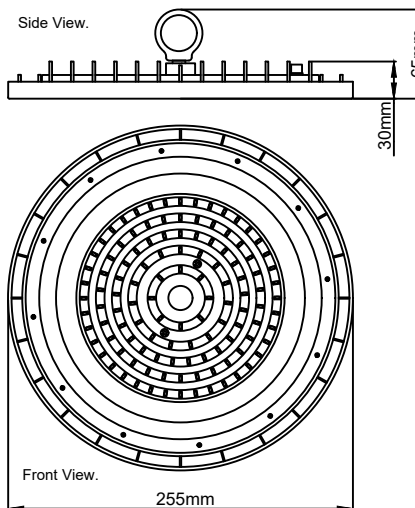
Always switch off mains supply before fitting or servicing. **This luminaire is suitable for indoor use only** and should not be fitted to damp or wet surfaces such as freshly plastered or painted surfaces. Do not use Megger or similar high voltage instruments. Due to the fact this luminaire contains electronic components that maybe damaged by high test voltages, they must be disconnected from the circuit before testing. To prevent damage to the luminaire, do not mix with conventional magnetic ballasts on the same electrical circuit. At the end of life the luminaire is classed as WEEE and should be disposed of in accordance with local legislation.

**Installation Procedure**

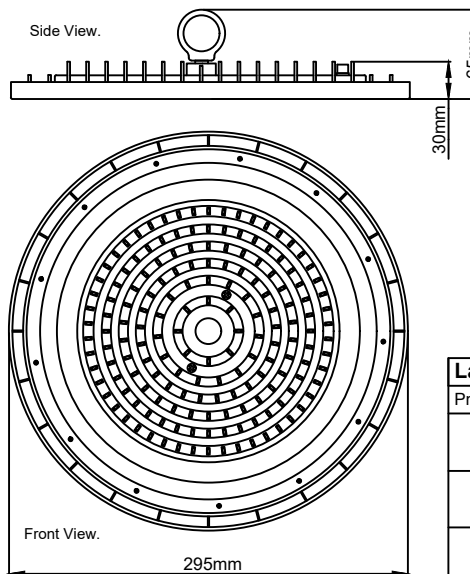
Isolate Mains before Installation **Eye Hook Suspension Option** Using the Suspension Eye hook provided and suitable suspension method, ensure screw lock on eye hook is fully tightened before proceeding to wire luminaire to mains. As per Fig.1. Connect luminaire mains cable to Mains Supply (L,E,N) using an appropriate in line connector, Turn on Mains and Test Luminaire



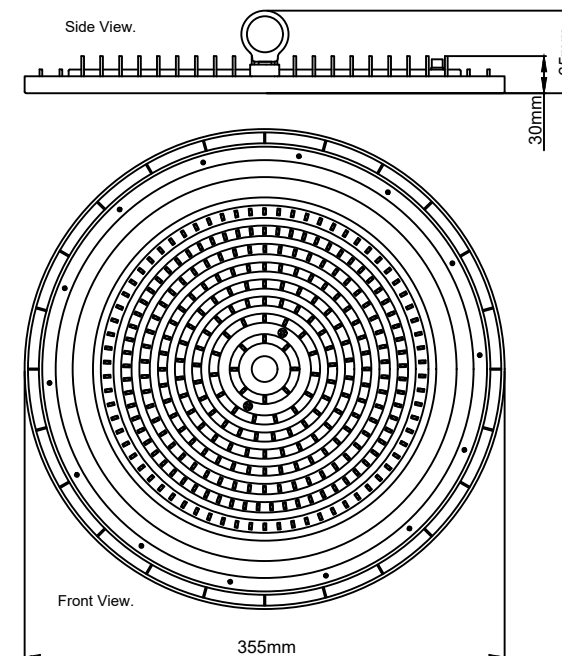
**KSR98333 - Dimensions**  
Supplied with 1M Mains Cable



**KSR98334 - Dimensions**  
Supplied with 1M Mains Cable



**KSR98335 - Dimensions**  
Supplied with 1M Mains Cable



Lamp Details					
Product Code	Description	Dimensions L x H	Wattage	Colour / CRI	Lumens
KSR98333	Rocca CR HBX 100W 4000K LED High Bay	Ø255mm x 65mm	100W	4000K / 80	11130lm
KSR98334	Rocca CR HBX 150W 4000K LED High Bay	Ø295mm x 65mm	150W	4000K / 80	17230lm
KSR98335	Rocca CR HBX 200W 4000K LED High Bay	Ø355mm x 65mm	200W	4000K / 80	23330lm

\*Please note: Depending on the amount of LED fittings on a circuit you may have to upgrade the breaker due to the way electronic LED drivers start up with higher inrush currents compared to HID lighting.



*This product contains a light source of energy efficiency class E  
The LED light source and Control Gear in this product is Non-replaceable.*