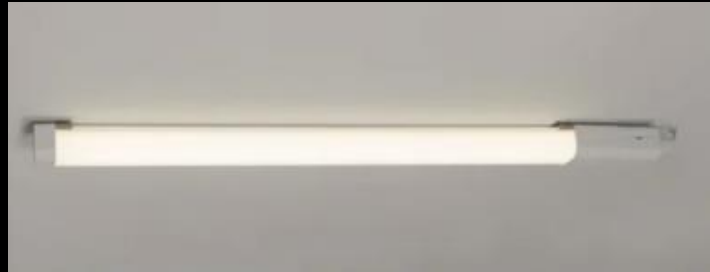




Navara CR LED Battens



Data Sheet

Product Information

The **Navara CR IP65** battens are suitable for a multitude of Industrial, Commercial & Domestic applications. This simple yet effective batten solution offers **3 sizes**, supplied in 4000K and one of only a few **Class II Battens** available on the market.

They come complete with a 3-year warranty for your peace of mind.

Push Fit Terminals



Product Features

- 3-year Warranty
- Class II
- IP65
- 4000K LED
- 3 Sizes & Outputs Available (2ft – 15W, 4ft-22W & 5ft-25W)
- Up to 2875 Lumens
- Up to 115 lumens per Circuit Watt
- CRI: Ra80
- Polycarbonate Construction
- 304 Stainless Steel Fixing Brackets Supplied
- Push Fit terminal Block
- Can be suspended (Not Supplied)
- L70 - 50,000Hrs

Product Specification

Product Code	Product Description	Wattage (W)	CCT (K)	Lumens (lm)	CRI (Ra)	Energy Efficiency Class	Protection Class
KSR9835	Navara CR 15W 2ft 4000K LED IP65 Batten	15W	4000K	1725lm	80	D	II
KSR9836	Navara CR 22W 4ft 4000K LED IP65 Batten	22W	4000K	2530lm	80	D	II
KSR9837	Navara CR 25W 5ft 4000K LED IP65 Batten	25W	4000K	2875lm	80	D	II

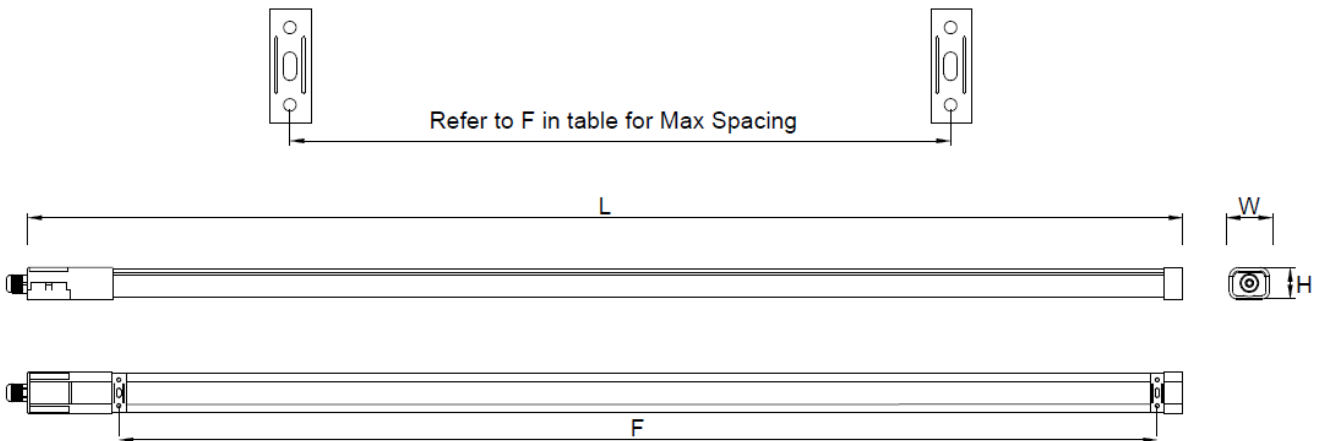
Nominal voltage	200~240VAC
Operating frequency	50-60Hz
PFC	0.9
Start Time	< 0.5 Sec
Ambient temperature range	-5°C to +30°C
IP rating	65

Construction

Body: Polycarbonate
 Diffuser: Polycarbonate
 Brackets: 304 Stainless Steel

Product Dimensions

KSR9835 - KSR9837



Product Code	Description	Dimensions L x W x H	Maximum Fixing Position (F)	Wattage	Colour	Lumens
KSR9835	Navara CR-2S	603mm x 44mm x 38mm	480mm	15W	4000K	1725
KSR9836	Navara CR-4S	1203mm x 44mm x 38mm	1080mm	22W	4000K	2530
KSR9837	Navara CR-5S	1503mm x 44mm x 38mm	1380mm	25W	4000K	2875

KSR Lighting is constantly developing and improving its products. For this reason, all product descriptions in this data sheet are intended as a general guide, and KSR may change specifications from time to time in the interest of product development, without prior notification or public announcement. All descriptions in this data sheet present only general particulars of the goods to which they refer and shall not form part of any contract. Data in this guide has been obtained in controlled experimental conditions. However, KSR Lighting cannot accept any liability arising from the reliance on such data to the extent permitted.