



Available Finishes: White or Black

Read these instructions before commencing installation. Please give these instructions to the owner/occupier after installation to retain for future reference/maintenance.

IP20 0.5m 240V 6W LED Max.

Important Information

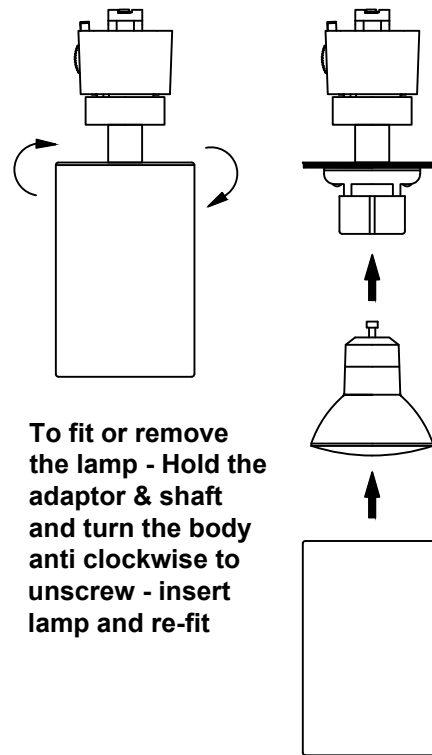
It is recommended that the track system is installed and fitted by a qualified electrician ensuring the installation complies to current wiring regulations & local building control. These products are designed for use with the Escala Pro single circuit track system only (Unless using the 3 Circuit adaptor). Any damaged parts should be replaced as soon as possible. KSR will not accept responsibility for any claims arising from a sub-standard installation.

Important User Advice

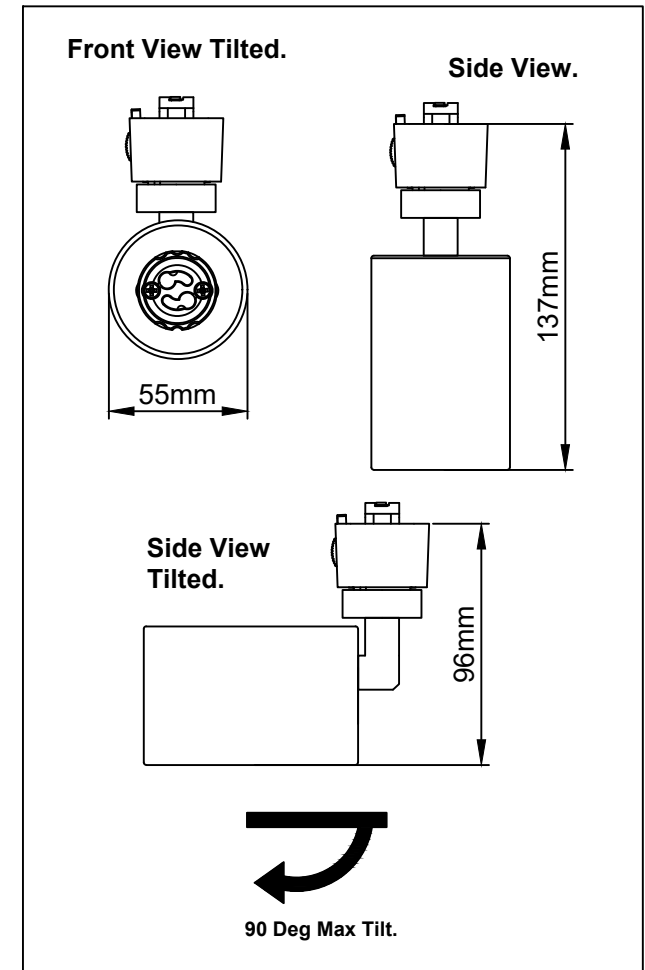
Always switch off mains supply before servicing, fitting or replacing lamps.
Always check the lamp is correct for the application, including its voltage and wattage.
Ensure the lamp is correctly located in the lampholder. To prevent damage to the luminaire, do not mix with conventional magnetic ballasts on the same electrical circuit.
At the end of life the luminaire is classed as WEEE under directive 2014/30/EU and should be disposed of in accordance with local legislation. Indoor use only.

Installation Procedure

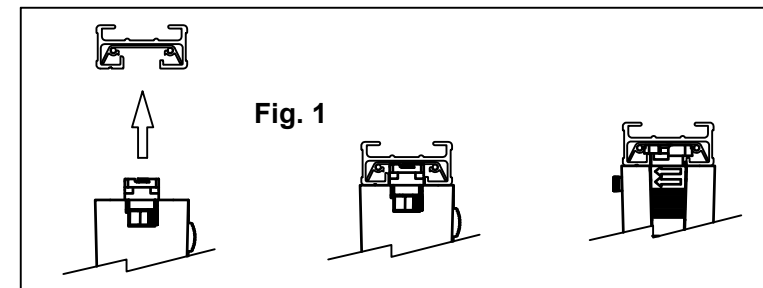
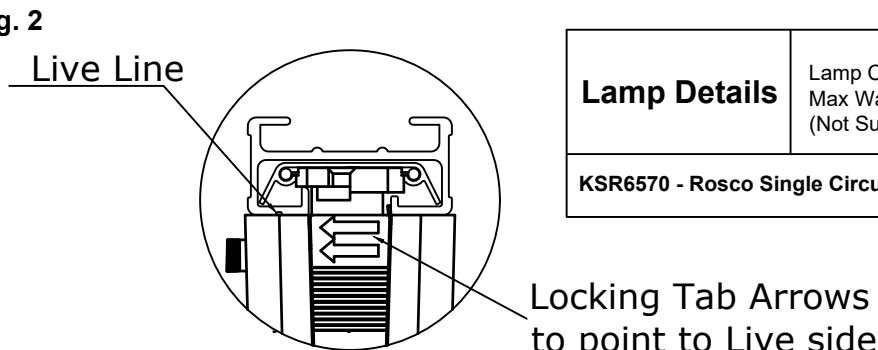
Familiarize yourself with the way the luminaire attaches to the track and ensuring the correct polarity. KSR recommend to insert the luminaire into track with the locking tab opposite the Live side (shown by the line on the track) then turn the luminaire clockwise until the locking tab locks into the track, never force the luminaire see Fig.1. Visual confirmation that the luminaire is located correctly is that the arrows on the locking tab should point towards the Live side of the track (shown by the line on the track) see Fig.2. Make sure the locking tab is located in the locked position. Fit lamp in fitting. Please observe the minimum safe distance from the nearest illuminated surface when setting the beam direction. Adjust beam aim by turning and tilting head of luminaire. Turn on the mains supply and ensure the luminaire is working correctly. Avoid touching a hot luminaire.



To fit or remove the lamp - Hold the adaptor & shaft and turn the body anti clockwise to unscrew - insert lamp and re-fit



Lamp Details	Lamp Cap: GU10	
	Max Wattage: 6W Max LED Only (Not Supplied)	
KSR6570 - Rosco Single Circuit Track Fitting - 1 x GU10 LED 6W Max		



KSR Lighting Aftersales: 023 92 674343
E-mail: aftersales@ksrlighting.com

