



Navara V2 HBX Multi Wattage High Bays



Data Sheet

Product Information

The Navara V2 HBX Multi Wattage IP65 High bays are suitable for a multitude of Industrial and commercial applications. Complemented by the optional Remote Programmable Microwave sensor this product provides an effective energy saving solution with high efficiency LED technology.

They come complete with a 5 year warranty for your peace of mind.



KSR98200 with
KSR98203

Product Features

- 5 year warranty
- Class I
- IP65/IK10
- 4000K LED
- Multi Wattage - 3 Sizes to cover 9 Outputs 60/80/100W, 90/120/150W or 120/160/200W
- Up to 26215 Lumens
- High efficiency CREE LED Chip
- CRI: >Ra84
- Optional 1-10V remote programmable plug in Microwave sensor
- 1-10V, Dali & Emergency Options available
- 90° Beam Angle
- Supplied with Eye hook suitable for jack chain/carabiner clip
- Optional surface mount Bracket
- L70 – 46,000hrs

Product Specification

Product Code	Product Description	Wattage (W)	CCT (K)	Lumens (lm)	CRI (Ra)	Energy Efficiency Class	Protection Class
KSR98200 V2	Navara HBX Multi Wattage 60/80/100W IP65 LED High Bay Black	60	4000	8015lm	84	D	I
		80	4000	9665lm	84	D	I
		100	4000	13630lm	84	D	I
KSR98201 V2	Navara HBX Multi Wattage 90/120/150W IP65 LED High Bay Black	90	4000	11540lm	84	D	I
		120	4000	15640lm	84	D	I
		150	4000	21055lm	84	D	I
KSR98202 V2	Navara HBX Multi Wattage 120/160/200W IP65 LED High Bay Black	120	4000	14770lm	83	D	I
		160	4000	20170lm	83	D	I
		200	4000	26215lm	83	D	I
Mounting Accessories							
KSR98208	Navara HBX 100W Surface Mounting Bracket						
KSR98209	Navara HBX 150W Surface Mounting Bracket						
KSR98210	Navara HBX 200W Surface Mounting Bracket						

Control Accessories

Product Code	Product Description	Operating Voltage	Detection Range	Recommended Mounting Heights	Time Delay	Lux Settings	Protection Class
KSR98203	Navara HBX Microwave Sensor	12VDC	4-10m (radius), Programmable	4-15m	2sec-10min	<2-50lux	III
KSR98204	Navara HBX Remote control programmer						
KSR98207	Navara HBX DALI Converter (Done in House)						

Emergency Options

Product Code	Product Description
KSR98205	Navara HBX Maintained Emergency Pack
KSR98206	Navara HBX Self-Test Emergency Pack

Technical Information

Technical Data	Navara V2 HBX Multi Wattage 60/80/100W IP65 LED			Navara V2 HBX Multi Wattage 90/120/150W IP65 LED			Navara V2 HBX Multi Wattage 120/160/200W IP65 LED		
Nominal voltage	200~240VAC			200~240VAC			200~240VAC		
Operating frequency	50-60Hz			50-60Hz			50-60Hz		
Wattage Selection	60W	80W	100W	90W	120W	150W	120W	160W	200W
Circuit Wattage (Including driver Losses)	59.62W	71.25W	95.49W	85.01W	116W	136W	109W	148.5W	179.3W
Circuit Current	0.26A	0.34A	0.42A	0.4A	0.53A	0.61A	0.51A	0.68A	0.84A
Efficiency (lm/W)	134.5	135.7	142.8	135.8	134.8	154.8	135.4	135.8	146.1
PFC	0.89	0.93	0.955	0.934	0.959	0.975	0.935	0.96	0.982
In Rush Current	TBC			TBC			TBC		
Start Time	TBC			TBC			TBC		
Beam Angle	90Deg			90Deg			90Deg		
Ambient temperature range	-5°c to +35°c			-5°c to +35°c			-5°c to +35°c		
IP rating	65			65			65		

Construction

Body: Die Cast Aluminium
Lens: Polycarbonate

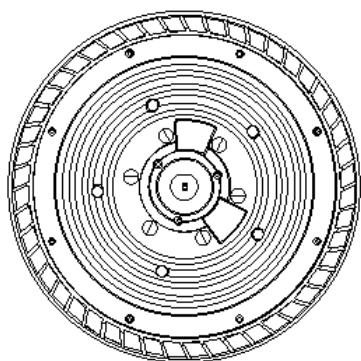
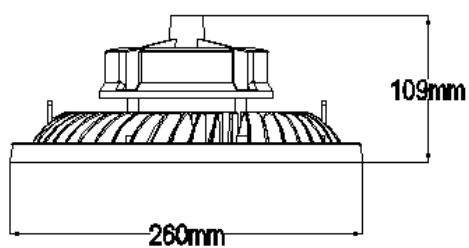
Standards

BSEN60598-1:2021 Luminaires – Part 1: General requirements and tests
BSEN60598-2-22:2014+A1 2020 Luminaires – Part 2: Luminaires for Emergency Lighting

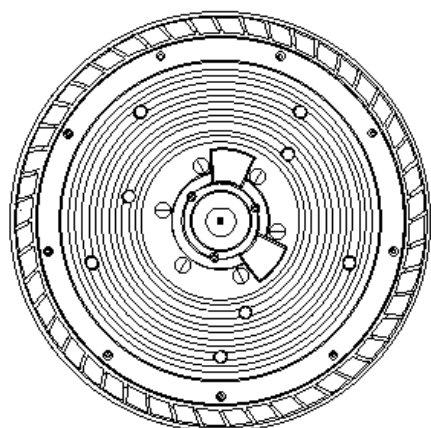
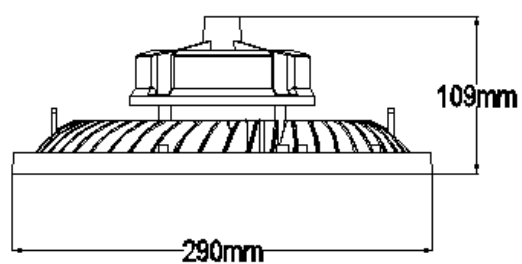
In Conformity with

LVD Low voltage directive 2014/35/EU
EMC Electromagnetic compatibility directive 2014/30/EU
ERP Energy related products directive 2019/2020/EU
RoHS Restriction of hazardous substances 2015/863/EU

Product Dimensions

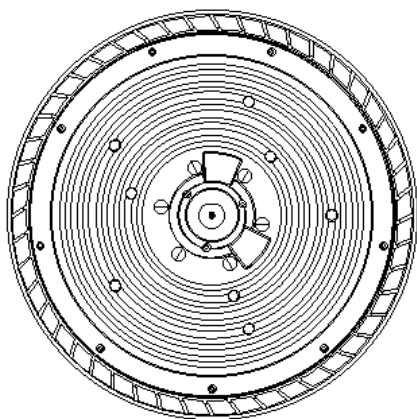
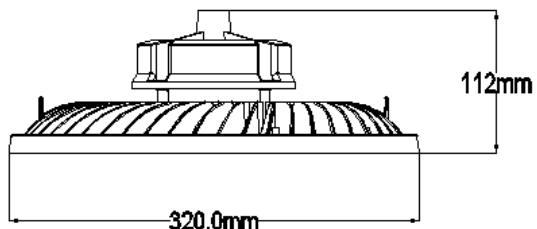


KSR98200

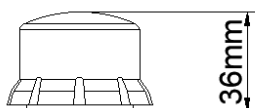
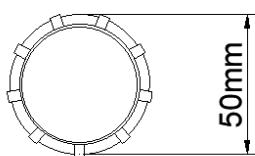


KSR98201

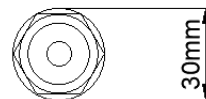
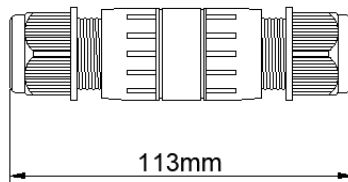
Product Dimensions continued



KSR98202

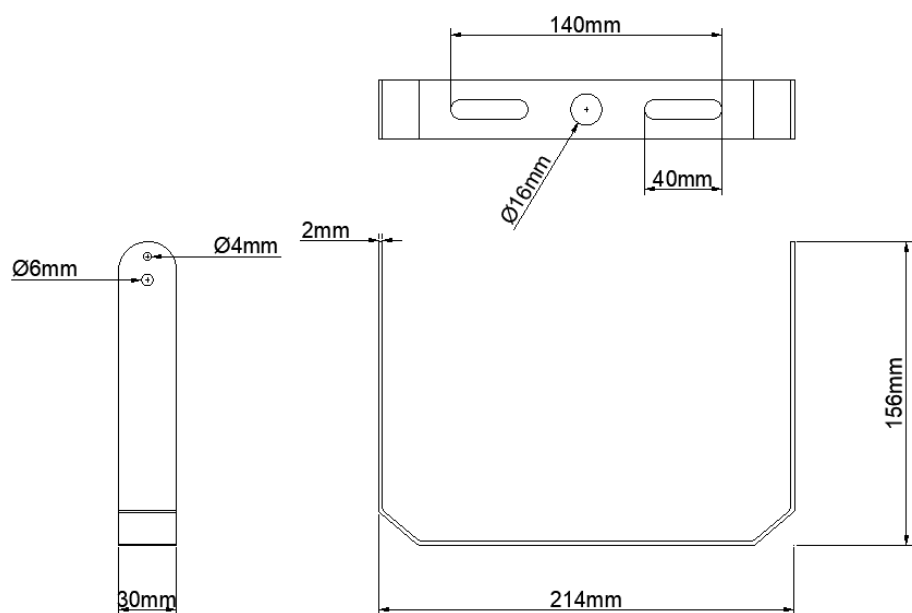


KSR98203

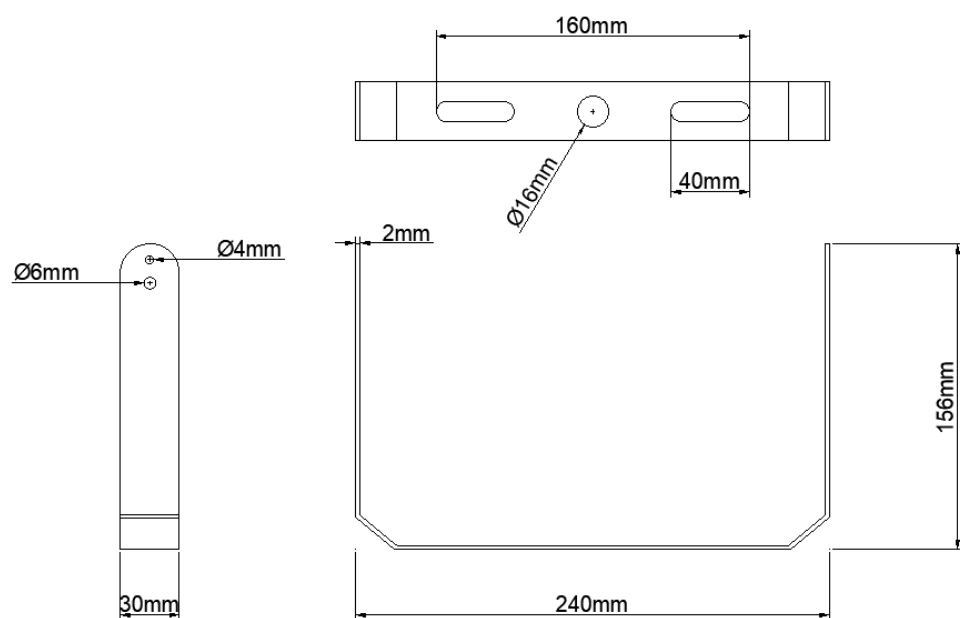


KSR98207

Product Accessory Dimensions

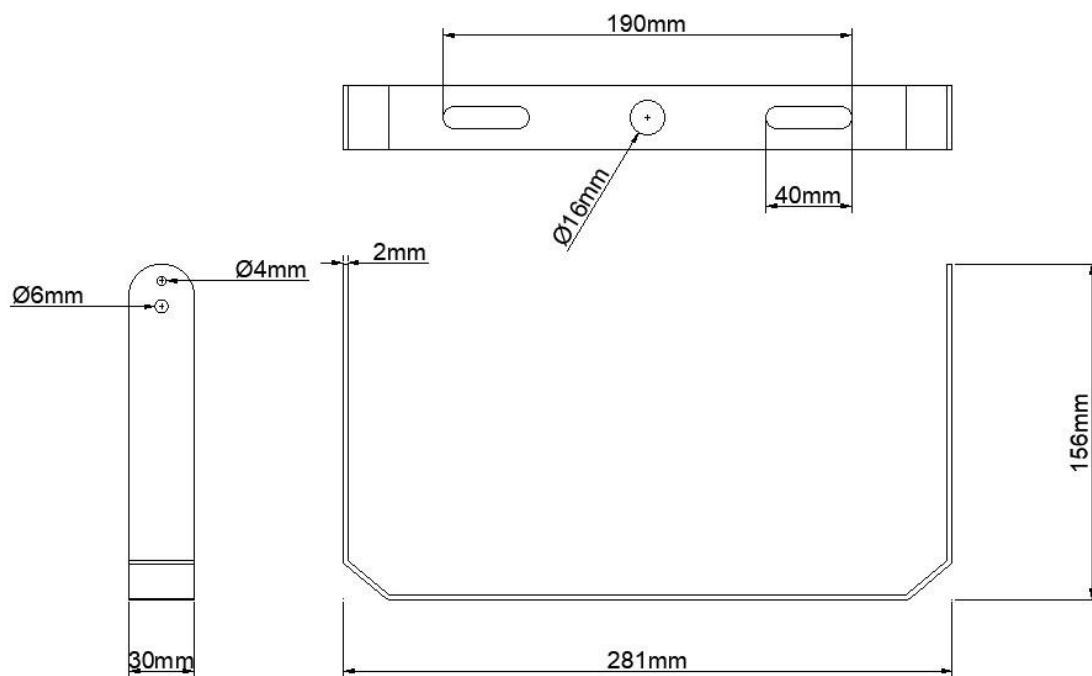


KSR98208



KSR98209

Product Accessory Dimensions



KSR98210

KSR Lighting is constantly developing and improving its products. For this reason, all product descriptions in this data sheet are intended as a general guide, and KSR may change specifications from time to time in the interest of product development, without prior notification or public announcement. All descriptions in

www.ksrlighting.com

KSR98200/201/202 V2-KSR98210-DS-IS-B-24.03.2023.

this data sheet present only general particulars of the goods to which they refer and shall not form part of any contract. Data in this guide has been obtained in controlled experimental conditions. However, KSR Lighting cannot accept any liability arising from the reliance on such data to the extent permitted.