

Available finish: 304 Stainless Steel

Read these instructions before commencing installation. Please give these instructions to the owner/occupier after installation to retain for future reference/maintenance.

**IP65**     **240VAC~50Hz 0.7w**

**These fittings are Class II and do not require an Earth connection**

**Important Information**

It is recommended that these luminaires are installed and fitted by a qualified electrician ensuring the installation complies with current IEE wiring regulations & local building control. These products are designed for connection to a 240V~50Hz supply. Any faulty, broken or damaged luminaires should be replaced immediately. KSR will not accept responsibility for any claims arising from a poor installation. Please Note: The limited warranty shall be deemed null and void in the following circumstances: Failure by the installer, end user or any third party to exercise caution to protect any covered product or part from outside damage, adverse temperature (normal operating ambient temperature -20 ~ +40°C), humidity conditions, fluctuations in the electrical system or physical abuse as well as failure related to workmanship in the installation of the products or parts.

**General Maintenance**

These products are suitable for external use, general maintenance and cleaning should be performed at least quarterly. Clean product outer using a damp cloth, do not use abrasive cleaners as this may damage the finish. After any maintenance, remember to check all seals are intact. Always switch off mains supply before servicing. Do not use Megger or similar high voltage instruments. Due to the fact this luminaire contains electronic components that maybe damaged by high test voltages, they must be disconnected from the circuit before testing. To prevent damage to the driver, do not mix with conventional magnetic ballasts on the same electrical circuit. At the end of life the luminaire is classed as WEEE under directive 2014/30/EU and should be disposed of in accordance with local legislation.

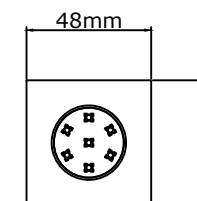
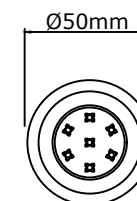
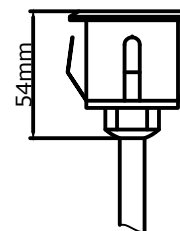
**Installation Procedure**

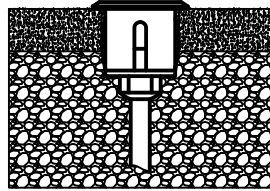
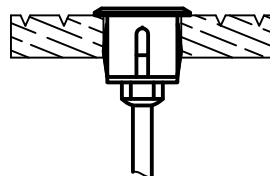
Familiarize yourself with the luminaire and ensure the power is turned off before installing the fitting. Take time to check all factory glands are tight and seals are in place. This luminaire can be installed in decking, patio slabs or concrete. For any application a cut out of 42mm is required. Using a suitable IP rated connector (Not supplied) terminate the wiring L-Live (Brown), N-Neutral. Dress the cabling under the luminaire and push it into the hole. Turn on the power and test the luminaire.

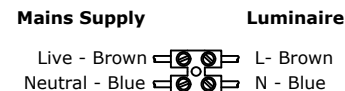
These fittings are not suitable for ceiling/soffit applications and should only be installed as uplights

Note: This luminaire requires a 240v AC supply, no external driver is required.

ØCut out



<p>Ensure 80mm of drainage under slab or concrete surface</p>  <p>Patio Application</p>	 <p>Decking Application</p>
---	---



**Lamp Details**

KSR1330 - 0.7W Integral LED Module - 35lm  
 KSR1331 - 0.7W Integral LED Module - 36lm  
 3000k Warm White, 6000k Cool White

**The light source of this luminaire is not replaceable; when the light source reaches its end of life the whole luminaire shall be replaced**

*This product contains a light source of energy efficiency class G*

