



Available finish:- White/Opal

Read these instructions before commencing installation. Please give these instructions to the owner/occupier after installation to retain for future reference/maintenance.

IP20 IK06 0.3m 240V~50Hz

### Important Information

It is recommended that these luminaires are installed and fitted by a qualified electrician ensuring the installation complies with current IEE wiring regulations & local building control. These products are designed for connection to a 240V~50Hz supply.

Any faulty, broken or damaged luminaires should be replaced immediately. KSR will not accept responsibility for any claims arising from a poor installation.

Please Note: The limited warranty shall be deemed null and void in the following circumstances: Failure by the installer, end user or any third party to exercise caution to protect any covered product or part from outside damage, adverse temperature (normal operating ambient temperature 0 ~ +40°C), humidity conditions, fluctuations in the electrical system or physical abuse as well as failure related to workmanship in the installation of the products or parts.

### Important User Advice

Always switch off mains supply before servicing.

This luminaire is suitable for indoor use only and should not be fitted to damp or wet surfaces such as freshly plastered or painted ceilings.

Do not use Megger or similar high voltage instruments. Due to the fact this luminaire contains electronic components that maybe damaged by high test voltages, they must be disconnected from the circuit before testing.

To prevent damage to the driver, do not mix with conventional magnetic ballasts on the same electrical circuit. At the end of life the luminaire is classed as WEEE under directive 2014/30/EU and should be disposed of in accordance with local legislation.

### Installation Procedure

Familiarize yourself with the luminaire and ensure the power is turned off before installing the fitting.

Loosen the 2 retaining screws located one each end of the body.

Remove the diffuser, the diffuser has a lip so working from one end compress the diffuser to release the lip.

The diffuser can be left attached to the fitting with the 2 retaining springs or the diffuser can be removed by unclipping the springs.

Offer the main body up to the ceiling and mark the fixing points. If using surface conduit ensure the besa boxes are at 600mm centres.

Secure the main body in place using suitable fixings for the application, dressing the supply cable though either of the three rear entry points using grommet supplied or via the end caps using suitable cable glands.

Connect the mains wiring, Permanent Live (PL), Switch Live (SL), Neutral (N) and Earth (⏚).

**Please note:** For testing purposes a provision should be made in the circuit for disconnection of the unswitched live (i.e. key switch).

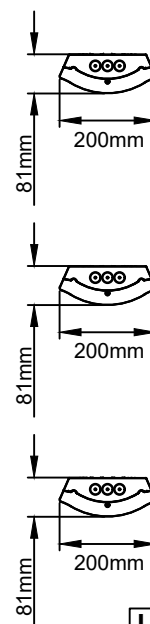
If removed re-connect the retaining springs, ensure the screws are not going to foul the casing, then refit the diffuser by clipping back into place (you may find it easier to insert one side first like a hinge then clip the remaining side into place). Ensuring you secure by tightening the retaining screws each end, do not over tighten.

Turn on the power and test the luminaire.

This fitting requires a 24 Hour initial charge period prior to any emergency testing, please see overleaf for testing routine, write on the battery label in permanent ink the date of commissioning. All results must be recorded and left with the end user.

The battery has a rated duration of at least 4 years but should be replaced if the duration of operation is less than 3 hours after a 24hr charge time with no interrupted supply.

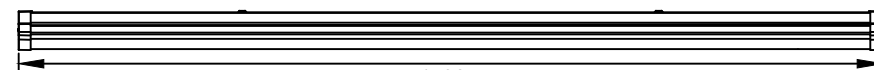
LEDs are an inductive load so avoid unwanted MCB tripping it may be necessary to uprate your breakers.



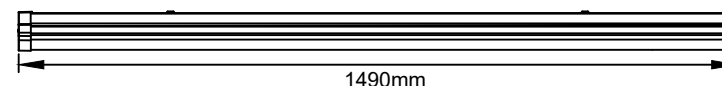
Surface Mount



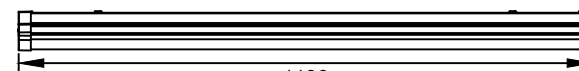
Beza box Mount



KSR9894EM



KSR9892EM & KSR9893EM



KSR9890EM & KSR9891EM

### Lamp Details

Product Code	Description	Equivalent to	Wattage	Colour	Lumens
KSR9890	Novara Pro-4S	4' Single	22W	4000K	2260
KSR9891	Novara Pro-4T	4' Twin	38W	4000K	3925
KSR9892	Novara Pro-5S	5' Single	30W	4000K	3080
KSR9893	Novara Pro-5T	5' Twin	60W	4000K	6430
KSR9894	Novara Pro-6T	6' Twin	65W	4000K	6950

The light source of this luminaire is not replaceable; when the light source reaches its end of life the light source and control gear shall be replaced

*This product contains a light source of energy efficiency class E*



KSR Lighting Aftersales: 023 92 674343

E-mail: aftersales@ksrlighting.com



Read these instructions before commencing installation. Please give these instructions to the owner/occupier after installation to retain for future reference/maintenance.

IP20 240V~50Hz

## Installation Particulars For End User

### Commissioning:

Once the luminaire has been installed in line with the manufacturer's recommendations, the battery should be allowed to charge for a minimum period of 24 hours before testing for its rated duration. If it is anticipated that the un-switched supply may be interrupted, it is imperative that the battery is left disconnected and commissioning is delayed until the supply is stable.

If the luminaire has been stored for a number of months, it may be necessary to repeat the charge/discharge process several times to re-condition the battery. After successful commissioning, the battery should be marked with the date of commission.

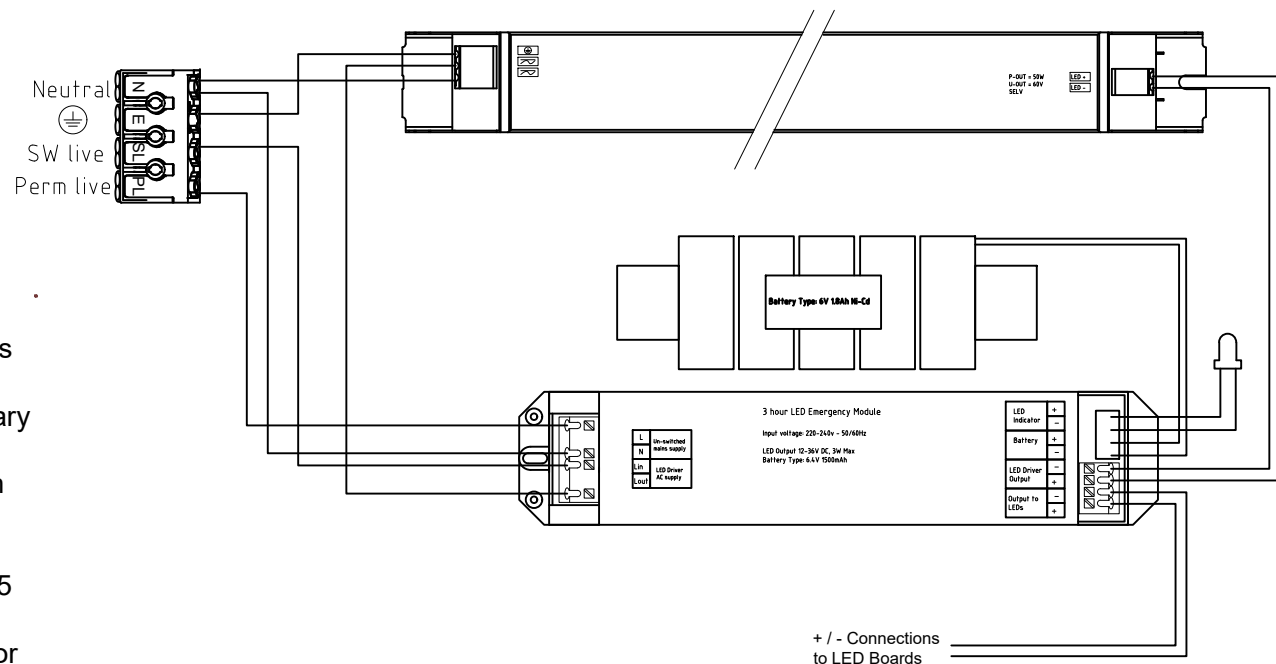
Routine test and inspection should be performed in accordance with EN50172 or otherwise local legislation. Short discharge periods of around 5 – 10 minutes each month for the purposes of inspection will not adversely affect the batteries and should be considered as a maintenance exercise for the battery.

Regular full discharge cycles may adversely affect the design life of the battery.

Ensure the Green LED Charge indicator is placed local to the luminaire and must be viable when the luminaire is switched on.

## Precautions

This product should be installed as per the following guidelines, electric shock or damage to the product may result if incorrectly installed. The luminaire should be installed by a qualified and competent electrician. If the luminaire is to be mounted in an cold or hot environments, consider the battery location as temperatures below 0°C will in this case compromise the design life and more frequent battery replacements may be needed. Likewise, if the luminaire is situated in a hot environment where the temperature is maintained at 25°C or above, or sited next to large panes of glass in which case it may be exposed to thermal magnification.



## Warranty

The LED luminaire comes complete with a 60 month warranty from date of purchase unless otherwise stated. Please note that the emergency packs and batteries come with a 12 month fixed warranty. Should any claim be made against battery failure within the warranty period, full and complete maintenance test reports must be provided.



KSR Lighting Aftersales: 023 92 674343

E-mail: [info@ksr-lighting.co.uk](mailto:info@ksr-lighting.co.uk)



All tests must be undertaken at times of least risk and in accordance with EN 50172:2004 as indicated below:

**Daily:**

LED charge indicators shall be visually inspected for correct operation.

**Monthly:**

(in addition to the daily check) If automatic testing devices are used, the results of the short duration tests shall be recorded.

Test shall be carried out as follows:

1. Switch the luminaire over to emergency mode to operate from the batteries by simulating a failure of supply to the emergency circuit for a period sufficient to ensure correct luminaire operation.

**Note:** The period of simulation failure should be sufficient for the purpose of this clause whilst minimising damage to the system components e.g lamps. During this period, all luminaires shall be checked to ensure that they are present, clean and functioning correctly. At the end of this test period, the unswitched supply should be restored and any indicator lamp or device should be checked to ensure that it is showing that the supply has been restored.

**Annually:**

If automatic testing devices are used, the results of the short duration tests shall be recorded. For all other systems the monthly inspection shall be carried out and the following additional tests made:

1. Each luminaire shall be tested monthly as above but for its full duration in accordance with the manufacturer's information.
2. The unswitched supply for the luminaire should be restored and any charge indicator lamp or device should be checked to ensure that it shows the unswitched supply has been restored. The charging arrangements should be checked for proper functioning.
3. The date of the test and its results shall be recorded in the system logbook.

A copy of this report must accompany any emergency luminaire returned to KSR Lighting for any reason.

