

# Qr Pro Fixed LED

Downlights



Data Sheet

## Product Information

The QR PRO LED downlights are the Ultimate solution for downlighting areas in domestic applications. With a vast array of attachments this solution allows you to build your fitting to suit your needs exactly as intended.

Complete with a 3 years warranty for your peace of mind.

## Product Features

- 3 years warranty
- IP20
- Class II
- High efficiency LED technology providing up to 114lm per watt
- CRI: Ra>84
- 6 Rim Options available: White, Black, Chrome, Satin Chrome, Brass and Copper
- 2 reflector options: 15° or 25°
- 2 output options available: 5W or 10W
- 3 Colour temperatures to Choose from 2700K, 3000K and 4000K
- L70/B10 – 52,000hrs



# Product Specification

Product Code	Product Description	Wattage (W)	CCT (K)	Lumens (lm)	CRI (Ra)	Energy Efficiency Class 2021	Protection Class
KSRDL400	QR Pro Fixed Recessed Frame						
KSRDL401	QR Pro Tilt Recessed Frame						
KSRDL402	QR Pro GU10 Lamp Holder & Push Fit Terminal						
KSRDL403	QR Pro 5w and 10w 2700K LED Module Only	Up to 10	2700	569 @ 5w	83	E	II
				803 @ 10w			
KSRDL404	QR Pro 5w and 10w 3000K LED Module Only	Up to 10	3000	573 @ 5w	84	E	II
				862 @ 10w			
KSRDL405	QR Pro 5w and 10w 4000K LED Module Only	Up to 10	4000	618 @ 5w	83	E	II
				957 @ 10w			
KSRDL406	QR Pro 5w LED Driver for 5w Module	5	N/A	N/A	N/A	E	II
KSRDL407	QR Pro 10w LED Driver for 10w Module	10	N/A	N/A	N/A	E	II
KSRDL408	QR Pro 15 degree reflector						
KSRDL409	QR Pro 25 degree reflector						
Bezel options							
KSRFRD401	Qr Pro White Bezel						
KSRFRD402	Qr Pro Chrome Bezel						
KSRFRD403	Qr Pro Satin Chrome Bezel						
KSRFRD407	Qr Pro Black Bezel						
KSRFRD408	Qr Pro Brass Bezel						
KSRFRD409	Qr Pro Copper Bezel						

Nominal voltage	220~240VAC
Operating frequency	50/60Hz
Ambient temperature range	-20°C~+40°C
Start time	< 0.5 sec
Beam angle	15-25°
IP rating	20

## Construction

Body	Steel
Bezel	Aluminium

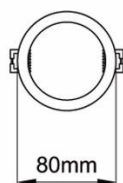
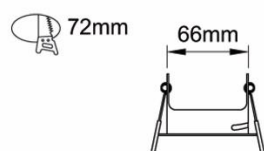
## Standards

BSEN60598-1:2021      Luminaires – Part 1: General requirements and tests

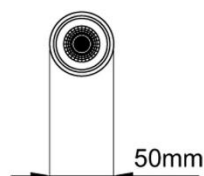
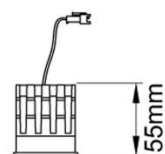
## In Conformity with

LVD	Low voltage directive 2014/35/EU
EMC	Electromagnetic compatibility directive 2014/30/EU
ERP	Energy related products directive 2019/2020/EU
RoHS	Restriction of hazardous substances 2015/863/EU

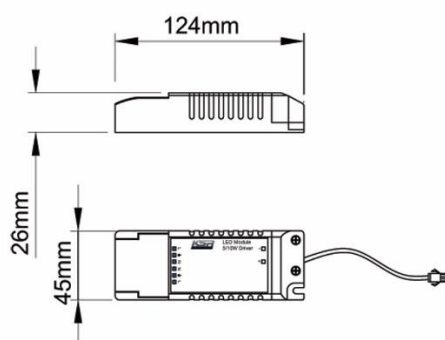
# Product Dimensions



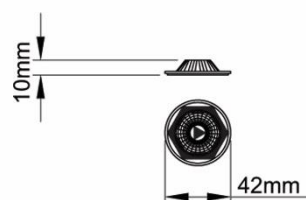
**KSRDL400**



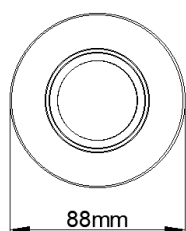
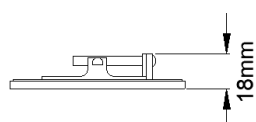
**KSRDL403-05**



**KSRDL406-07**



**KSRDL408-09**



**KSRFRD401-409**

KSR Lighting is constantly developing and improving its products. For this reason, all product descriptions in this data sheet are intended as a general guide, and KSR may change specifications from time to time in the interest of product development, without prior notification or public announcement. All descriptions in this data sheet present only general particulars of the goods to which they refer and shall not form part of any contract. Data in this guide has been obtained in controlled experimental conditions. However, KSR Lighting cannot accept any liability arising from the reliance on such data to the extent permitted.